



Bulletin

THE OFFICIAL JOURNAL OF THE KENT COUNTY MEDICAL SOCIETY & THE KENT COUNTY OSTEOPATHIC ASSOCIATION

FALL 2019

HEALTH CAN'T WAIT

Prior Authorization Reform

PAGE 11



PAGE 6
Fall CME Opportunities

PAGE 26
Holiday Card Fundraiser

PAGE 30
E-cigarette Dangers

CUSTOM HOME BUILDER. TRUSTED ADVISOR.



**AS A MEDICAL PROFESSIONAL, THE MINUTE
DETAILS ARE CRITICALLY IMPORTANT.**

As a full service custom home builder, founded by a family of engineers, the little details are what make us different.



Let's talk about your project (616)446-3482 • whitmorehomesllc.com/kcms



BULLETIN

EDITORIAL COMMITTEE

Gregory J. Forzley, MD — *Editor*
Michelle M. Condon, MD
Patrick J. Droste, MS, MD
Harland T. Holman, MD
Herman C. Sullivan, MD

PUBLISHED BY

Kent County Medical Society &
Kent County Osteopathic Association
233 East Fulton, Suite 222
Grand Rapids, MI 49503
Phone 616.458.4157
Fax 616.458.3305
www.kcms.org • www.kcoa-mi.org

AFFILIATED AGENCIES

Kent County Medical Society Alliance
Kent Medical Foundation

*All statements of opinions in
The Bulletin are those of the individual
writers or speakers, and do not necessarily
represent the opinions of the Kent County
Medical Society and the Kent County
Osteopathic Association.*

*The Bulletin reserves the right
to accept or reject advertising copy.
Products and services advertised
in The Bulletin are neither endorsed
nor warranted by the Kent County
Medical Society or the Kent
County Osteopathic Association.*

FALL 2019 • Vol. 104, No. 3

Contents



Physicians meet with local legislators regarding Prior Authorization.

KCMS

- In Memoriam **4**
- Meetings of Interest **5**
- President's Message **11**

COLLABORATION

- Prior Authorization **12**

KCOA

- Meetings of Interest **16**
- President's Message **17**
- Fall CME Opportunities **19**

CONTRIBUTORS

- 21** Kent Medical Foundation
- 28** Alliance Heartbeat
- 30** Kent County Health Department
- 35** MSU - College of Human Medicine

GET INVOLVED:

Learn more about the Kent County Medical Society at www.kcms.org.

Learn more about the Kent County Osteopathic Association at www.kcoa-mi.org.

In Memoriam

PETER APP, MD

Dr. Peter App passed away on May 27, 2019. Dr. App earned his medical degree from Temple University School of Medicine in Philadelphia before moving to Grand Rapids for his internship and residency in internal medicine at Butterworth Hospital. During the Vietnam War, Dr. App served in the Navy as a Medical Receiving Officer while stationed in Illinois. He was transferred to Iceland where he served as General Medical Officer and director of the Internal Medicine Clinic. Dr. App was released from active duty in 1970 but continued in the reserves until 1996, whereby he was discharged with distinction as a Commander. He served as the first medical director of St. Mary's Hospital Emergency Department. Dr. App was a member of the KCMS since 1972.

LAURENCE J. BURNS, DO

Dr. Laurence Burns passed away on August 19, 2019. Dr. Burns attended Aquinas College and earned his medical degree from Kirksville College of Osteopathy and Surgery. He completed his internship and residency in obstetrics and gynecology at Grand Rapids Osteopathic Hospital followed by a fellowship in endocrinology at Beaumont Hospital in Detroit. He practiced obstetrics and gynecology for 42 years, 37 of those at Mercy Health St. Mary's. Dr. Burns helped found Clinica Santa Maria, a health care clinic for Spanish-speaking patients, and was the clinic's first obstetrician/gynecologist to volunteer his time on his days off for many years. He headed the local Right to Life Chapter from 1974 through 1989 and sat on the state board of directors. Dr. Burns was a member of the KCMS since 1995.

ROBERT GILLIES, MD

Dr. Robert Gillies passed away on September 17, 2019. He earned his bachelor's degree at Calvin College and earned his medical degree from the University of Michigan Medical School where he also completed his internship and residency. Dr. Gillies received further training in radiation-oncology at the University of Iowa. He founded Hospice of Greater Grand Rapids and served as founding Medical Director. Dr. Robert Gillies is also responsible for developing the Lakeshore Radiation Oncology Center in Holland, providing a true Cancer Center in the community. Dr. Gillies was a member of the KCMS since 1964.

MARC G. HAIDLE, MD

Dr. Marc Haidle passed away on August 17, 2019. Dr. Haidle graduated from Michigan State University in 1965, and the University of Michigan Medical School in 1969. After completing his internship at Blodgett Hospital, he

served in the US Army from 1970 to 1972. Dr. Haidle then returned to Grand Rapids for his residency in radiology, where he remained for the rest of his professional life, practicing with Advanced Radiology Services. Dr. Haidle was a member of the KCMS since 1975.

ROBERT W. HARRISON, MD

Dr. Robert Harrison passed away on September 15, 2019. Dr. Harrison enlisted in the Navy and, after being honorably discharged, entered the University of Iowa. Upon graduation in 1949, he entered the University of Iowa Medical School where in 1953 he completed medical school and a MS degree in physiology. After medical school, he completed an internship at the University of Chicago, followed by a four-year general surgery residency at the University, and a two-year residency in thoracic surgery at Cook County Hospital. Dr. Harrison was a member of the KCMS since 1962.

CONTINUED ON PAGE 9

SOLID ADVICE. REAL SOLUTIONS. FOR HEALTH CARE BUSINESS.

At The Health Law Partners, our unparalleled knowledge of the business of health care is coupled with timely, practical solutions designed to maximize value.

The HLP attorneys represent clients in substantially all areas of health law, with particular emphasis on:

- Licensure & Staff Privilege Matters
- Health Care Litigation
- Health Care Investigations
- Civil & Criminal False Claims Defense
- Stark, Anti-Kickback, Fraud & Abuse, & Other Regulatory Analyses
- Physician Group Practice Ancillary Services Integration and Contractual Joint Ventures
- Appeals of RAC, Medicare, Medicaid & Other Third Party Payor Claim Denials & Overpayment Demands
- Health Care Contractual, Corporate & Transactional Matters
- Compliance & HIPAA
- Health Care Billing & Reimbursement

HLP 
THE HEALTH LAW PARTNERS

MICHIGAN
NEW YORK

TheHLP.com [248.996.8510]

KCMS OFFICERS & DIRECTORS

PRESIDENT

Megan M. Edison, MD

PRESIDENT-ELECT

Sandy Dettmann, MD

PAST PRESIDENT

Eric L. Larson, MD

SECRETARY

Gerald R. Lee, MD

DIRECTOR

Belén Amat, MD

5TH DISTRICT DIRECTOR

Anita R. Avery, MD

DELEGATION CHAIR

Lee P. Begrow, DO

**MSMS DELEGATES
TO JANUARY 2020**

Lee P. Begrow, DO

Donald P. Condit, MD, MBA

Michelle M. Condon, MD

Megan M. Edison, MD

David E. Hammond, MD

Brian A. Roelof, MD

**MSMS ALTERNATE DELEGATES
TO JANUARY 2020**

Belén Amat, MD

Mark Clark, MD

Patrick J. Droste, MS, MD

Gerald R. Lee, MD

Cara Poland, MD

**MSMS DELEGATES
TO JANUARY 2021**

John H. Beernink, MD

Jayne E. Courts, MD

Eric L. Larson, MD

John B. O'Donnell, MD

John E. vanSchagen, MD

David W. Whalen, MD

Phillip G. Wise, MD

**MSMS ALTERNATE DELEGATES
TO JANUARY 2021**

Sandy Dettmann, MD

Harland T. Holman, MD

Scott Russo, MD

Herman C. Sullivan, MD



Join Us

KCMS MEETINGS OF INTEREST

OCTOBER 14, 2019

KCMS/KCOA LEGISLATIVE COMMITTEE LUNCHEON

Masonic Center | Noon

OCTOBER 23-26, 2019

MSMS 154TH ANNUAL SCIENTIFIC MEETING

Sheraton Detroit | Novi, MI

See more information on page 6

OCTOBER 30, 2019

HEALTH CAN'T WAIT ACTION DAY

Radisson Hotel at the Capitol | Lansing, MI

For more information, visit www.healthcantwait.org/take-action

JANUARY 22, 2020

KCMS 117TH ANNUAL MEETING OF THE MEMBERSHIP

Watermark Country Club, 6:30pm

OUR MISSION:

The Kent County Medical Society is a professional association, uniting the physicians in Kent County into a mutual, neutral organization; preserving and promoting the health of the citizens of Kent County, the physician/patient relationship, the medical profession, and the interests of physicians.

Visit us

For event details, check out our website kcms.org



CME Opportunities for KCMS Members

The following CME opportunities are made available by the MSMS Foundation to assist physicians in meeting CME requirements.

WEBINARS OFFERING CME:

- Balancing Pain Management and Prescription Medication Abuse: Chronic Pain and Addiction*
- Balancing Pain Treatment and Legal Responsibilities*
- Human Trafficking*
- Medical Ethics – Conscientious Objection among Physicians*
- Pain and Symptom Management Series*
 - Opioid Town Hall*
 - Pain and Opioid Management*
 - The CDC Guidelines*
 - The Current Epidemic and Standards of Care*
 - Treatment of Opioid Dependence*
 - The Role of the Laboratory in Toxicology and Drug Testing*
- Legalities and Practicalities of HIT - Cyber Security: Issues and Liability Coverage
- Legalities and Practicalities of HIT - Engaging Patients on Their Own Turf: Using Websites and Social Media
- MAPS Update and Opportunities*
- Michigan Automated Prescription System Update*
- Opioid Town Hall*
- Reading Remittance Advice
- Section 1557: Anti-Discrimination Obligations
- Sexual Misconduct – Prevention and Reporting
- Update on Chronic Fatigue Syndrome Part 1: Clinical Diagnostic Criteria for Chronic Fatigue Syndrome/ CFS now called Myalgic Encephalomyelitis or ME/ CFS
- Update on Chronic Fatigue Syndrome Part 2: Uniting Compassion, Attention and Innovation to treat ME/CFS

WEBINARS AT NO COST TO MEMBERS:

- Billing 101
- Balancing Pain Management and Prescription Medication Abuse: Chronic Pain and Addiction*
- Balancing Pain Treatment and Legal Responsibilities*
- Claim Appeals
- Credentialing
- Health Care Providers' Role in Screening and Counseling for Interpersonal and Domestic Violence: Dilemmas and Opportunities
- HEDIS Best Practices
- In Search of Joy in Practice: Innovations in Patient Centered Care
- Prescribing Legislation*
- Tips and Tricks on Working Rejections
- Coding and Billing Webinars:
 - Access to Medicare Changes to E&M Codes for 2019 and other Coding Updates
 - Billing 101
 - Claim Appeals
 - Credentialing
 - Reading Remittance Advice
 - Tips and Tricks on Working Rejections

Visit <https://connect.msms.org/Education-Events/On-Demand-Webinars> for complete listing of On-Demand Webinars.

**Fulfills Board of Medicine Requirement.*

2019 MSMS ANNUAL SCIENTIFIC MEETING

Morning, afternoon and evening clinical courses available.

- **Date:** Tuesday, October 22 - Saturday, October 26
- **Location:** Sheraton Detroit Novi Hotel, Novi
- **Register online:** www.msms.org/eo.
- **Intended for:** Physicians and all other health care professionals
- **Contact:** Marianne Ben-Hamza
(517) 336-7581 or mhenhamza@msms.org

A DAY OF BOARD OF MEDICINE RENEWAL REQUIREMENTS

- **Date:** Friday, November 1
- **Location:** Holiday Inn, Ann Arbor
- **Register online:** www.msms.org/eo.
- **Intended for:** Physicians and all other health care professionals.
- **Contact:** Beth Elliott
(517) 336-5789 or belliott@msms.org

23RD ANNUAL CONFERENCE ON BIOETHICS

- **Date:** Saturday, November 2
- **Location:** Holiday Inn, Ann Arbor
- **Register online:** www.msms.org/eo.
- **Intended for:** Physicians, bioethicists, residents, students, other health care professionals, and all individuals interested in bioethical issues.
- **Contact:** Beth Elliott
(517) 336-5789
belliott@msms.org.

RESERVE YOUR SPOT TODAY!

Register online at www.msms.org/eo or call the MSMS Registrar at (517) 336-7581.

A RELATIONSHIP WITH YOUR BANK AS HEALTHY AS THE RELATIONSHIP WITH YOUR PATIENTS.



At Horizon, you always have a dedicated Business Advisor who will provide sensible advice to help your medical practice succeed.

- Medical Practice Loans
- Acquisition Financing
- Refinancing
- Business Banking
- Lines of Credit
- Deposit Solutions

Contact your local Business Advisor today.



HorizonBank.com | 888-873-2640



Mark Your Calendar



KCMS 117TH ANNUAL MEETING

OF THE MEMBERSHIP

Wednesday, January 22, 2020

6:30-8:30pm

Watermark Country Club

5500 Cascade Rd SE, Grand Rapids, MI 49546

Members and spouses/guests welcome

AGENDA

- **2019 Year in Review**
*KCMS President
Megan Edison, MD*
- **Election of New Officers**
- **Appointment of Delegates
and Alternate Delegates**
- **Installation of 2020
KCMS President**
Sandy Dettmann, MD

IN MEMORIAM FROM PAGE 4

FRANK J. KRHOVSKY, MD

Dr. Frank Krhovsky passed away on August 7, 2019. Dr. Krhovsky matriculated into an engineering program at Princeton University but the events of WWII led him to join the Army, serving in the 511th Parachute Infantry Regiment of the 11th Airborne Division. Dr. Krhovsky was awarded the Silver Star for gallantry and was a recipient of the Purple Heart. On discharge from the Army, Dr. Krhovsky earned his medical degree from Marquette School of Medicine. He completed his anesthesia training at St. Mary's Hospital in Grand Rapids where he subsequently practiced anesthesia for 42 years. Dr. Krhovsky was a member of the KCMS since 1955.

RICHARD H. SIDELL, MD

Dr. Richard Sidell passed away on August 20, 2019. Dr. Sidell graduated from University of Chicago-Rush Medical School and completed his surgical residency at the Mayo Clinic in Rochester, Minnesota. He then moved to Grand Rapids where he practiced general surgery at Blodgett, Butterworth and Gerber Hospitals for almost 40 years before retiring in 1984. Dr. Sidell was a member of the KCMS since 1945.

RALPH TEN HAVE, MD

Dr. Ralph Ten Have passed away on June 7, 2019. Dr. Ten Have graduated from Calvin College and University of Michigan Medical School. He completed his internship at Wayne County General Hospital and served with the United States Public Health Service in Winnebago, Nebraska from 1956 to 1958. Dr. Ten Have went on to earn his Master's in Public Health from the University of Michigan and specialized in family planning, practicing in the Grand Rapids area until his retirement in 1985. Dr. Ten Have was a member of the KCMS since 1971.

ZIGFRIDS ZADVINSKIS, MD

Dr. Zigfrids Zadvinskis passed away on June 15, 2019. His family fled Soviet rule in their home country of Latvia leading to Dr. Zadvinskis studying medicine in Germany at Baltic University Hamburg, later transferring to the University of Wurzburg. After immigrating to the United States, he returned to Germany in 1954 to complete his medical studies at Medical School Wurzburg followed by an internship and residency in Internal Medicine at Blodgett Memorial Hospital and Henry Ford Hospital in Detroit. Dr. Zadvinskis practiced Internal Medicine in Grand Rapids until his retirement in 1995. Dr. Zadvinskis was a member of the KCMS since 1959.



HOD Resolutions Welcome

Some of the most important work the Kent County Medical Society does for all its members, no matter their specialty or practice mode (solo, small or large group, or hospital based) comes in the form of legislative advocacy. All KCMS members have the opportunity to make their voices count and watch their dues dollars at work!

The MSMS House of Delegates will meet in Dearborn in late April 2020. It is never too early to think about resolutions to be considered by the Kent Delegation. Visit the KCMS website at www.kcms.org and click on "HOD Resolutions Welcome." We've provided a resolution template as well as a resolution writing guide. We urge you to get involved today and make your voice heard!

Private Banking Customized Solutions

Exclusively from



Your First National Bank of Michigan Private Banker will provide LOCAL customized solutions for all your banking needs. Please contact us for details.



Contact
Amy Vervaras
616.242.8387

fnbmichigan.com

141 Ionia Ave., N.W., Grand Rapids | 616.242.6500



Your HEALTH CARE LAW FIRM



Wachler & Associates represents healthcare providers, suppliers, and other individuals in Michigan and nationally in all areas of health care law, including:

- **Provider Contracting**
- **RAC, Medicare, Medicaid and Commercial Payor Audits**
- **Billing and Reimbursement**
- **Stark Law, Anti-Kickback Statute, and Fraud & Abuse Compliance**
- **Licensure, Staff Privilege and Credentialing**
- **Physician and Physician Group Issues**
- **Corporate and Transactional Matters**
- **Regulatory Compliance**
- **Healthcare Litigation**
- **Healthcare Investigations**
- **Fraud and False Claims Defense**
- **Provider Participation/Termination Matters**
- **HIPAA and HITECH Compliance**

WACHLER
ASSOCIATES

SERVING HEALTHCARE PROVIDERS FOR OVER 30 YEARS

248.544.0888 • wachler.com



Tax Deductibility of Your Dues as a Business Expense

Contributions or gifts to the Michigan State Medical Society (MSMS) and Kent County Medical Society (KCMS) are not tax deductible as charitable contributions for federal income tax purposes. However, a portion of your dues may be tax deductible as ordinary and necessary business expenses.

MSMS estimates that 12% of your 2020 dues will be nondeductible as this portion is allocable to lobbying as defined by law. If you pay for your 2020 MSMS dues prior to December 31, 2019, you may deduct up to 88% of that as a business expense.

KCMS estimates that 3% of your 2020 dues will be nondeductible as this portion is allocable to lobbying as defined by law. If you pay for your 2020 KCMS dues prior to December 31, 2019, you may deduct up to 97% of that as a business expense.

DON'T
FORGET

REMINDER
**PROMPT PAYMENT OF
YOUR KCMS DUES IS
GREATLY APPRECIATED!**





Megan Edison, MD
2019 KCMS President,
Board of Directors

Working Together to Build Awareness of Prior Authorization

Physician members of the Michigan State Medical Society, Kent County Medical Society and Kent County Osteopathic Association are working to end delays in patients' access to health care caused by insurance red tape. They are raising the issue with state politicians and educating the public on how prior authorization impacts medical care.



KCMS and KCOA members and leaders meet with state representatives for a roundtable discussion on Prior Authorization challenges.

Roundtable Discussion

State Representatives Lynn Afendoulis (73rd District), Tommy Brann (77th District), Mark Huizenga (74th District), and Steven Johnson (72nd District) met with physician members of the Michigan State Medical Society, Kent County Medical Society and Kent County Osteopathic Association to discuss the delays in patient care due to prior authorization. We would like to thank all who attended and participated in the stimulating discussion. A special thanks goes to our meeting facilitator, KCMS Past President Jayne Courts, MD, KCMS Board President Meg Edison, MD, KCMS President Elect Sandy Dettmann, MD, KCOA Board Member Bill Sanders, DO, and Christin Nohner, MSMS Director of State and Federal Government Relations.

Radio Discussion

KCMS Members Dr. Joshua Suderman, Vice President of Javery Pain Institute, and Dr. Cara Poland, Spectrum Health Medical Director of Addiction Medicine, stopped by The WGUV Morning Show with Shelley Irwin to discuss the issue of prior authorizations, how the process works and how it impacts medical care. Dr. Suderman highlighted the efforts of the Health Can't Wait coalition and what they are doing in Michigan to address this barrier to care. To watch the full interview, follow Javery Pain Institute on Facebook or go to javerypain.org.



Dr. Poland



Dr. Suderman

It's time for a change because HEALTH CAN'T WAIT!

HEALTH CAN'T WAIT Action Day

Wednesday, October 30, 2019 | 9am-3pm
Radisson Hotel, 111 North Grand Ave., Lansing, MI

The Health Can't Wait Coalition is organizing an action day in Lansing to raise awareness around legislation to reform prior authorization and step therapy, and we encourage you to attend. Reform won't be possible without the collective voice of Michigan's physicians, providers, practice managers, and patients, standing together and taking on this fight.

» *Your voice is the key to success at the Capitol!*

HEALTH CAN'T WAIT

Health Can't Wait is a coalition of patients, physicians, health care providers, and patient-supported groups working to put Michigan patients first. We aim to end dangerous delays in patients' access to health care caused by insurance company bureaucracy, including prior authorization and step therapy requirements.



**Share your Health Can't Wait story
at healthcantwait.org**

We want to highlight the impact of insurance company red tape, so we can help fix it. Tell your story—or those of your patients—so we can begin making the changes Michigan needs.



**Talk the issue up with your family,
friends, and colleagues**

Use your own networks—and social media—to help build awareness of this problem, and consider reaching out to your lawmakers. The coalition is standing by to help you craft and share your story.

We need your help! Visit HealthCantWait.org

Who is affected?

Prior Authorization and Fail First are often applied to patients living with a wide range of diseases and chronic conditions, including, but not limited to:

- Arthritis
- Autoimmune Disorders
- Cancer
- Chronic Pain Related Disease
- Colitis
- Crohn's Disease
- Diabetes
- Epilepsy
- Heart Disease
- Hemophilia
- HIV/AIDS
- Lupus
- Mental Illness
- Multiple Sclerosis
- Psoriasis
- Rheumatoid Arthritis

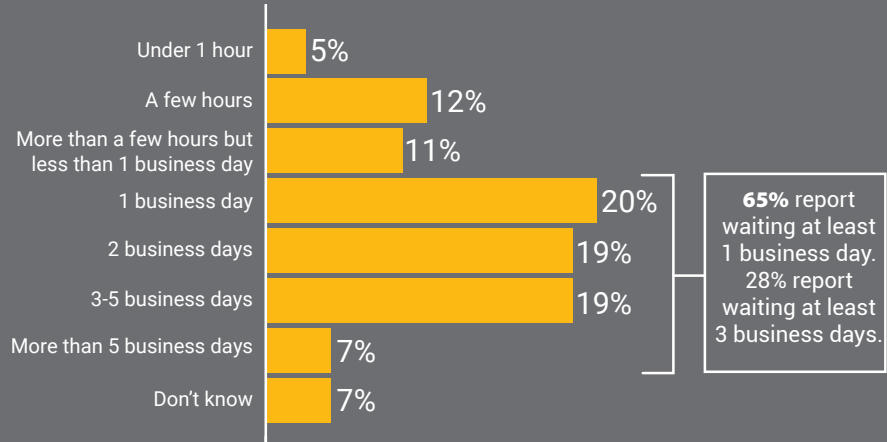
WHO

» *Patients living with a wide range of diseases and chronic conditions*

2018 American Medical Association (AMA) Prior Authorization Physician Survey: Patient Impact

Average wait time for PA responses

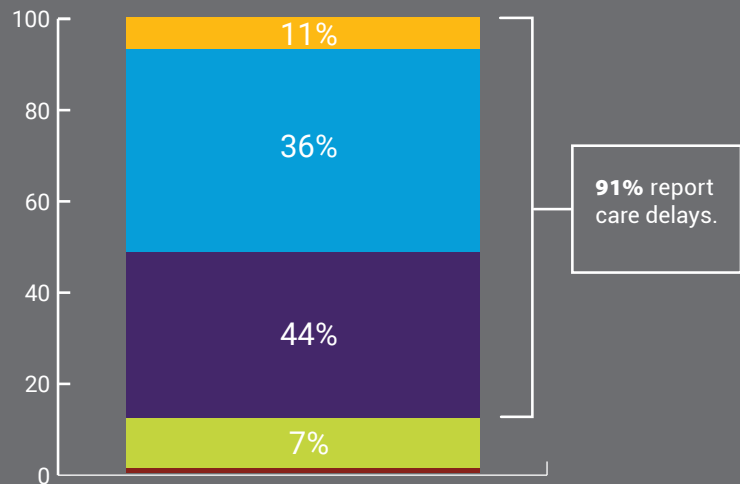
Q: In the last week, how long on average did you and your staff need to wait for a PA decision from health plans?



Average wait time for PA responses

Q: For those patients whose treatment requires PA, how often does this process delay access to necessary care?

- Always
- Often
- Sometimes
- Rarely
- Never (0%)
- Don't Know (1%)



Total does not sum to 100 due to rounding.
Subtotal sums to 75 percent due to rounding.

Q: In your experience, has the PA process ever affected care delivery and led to a serious adverse event (e.g., death, hospitalization, disability/permanent bodily damage, or other life-threatening event) for a patient in your care?

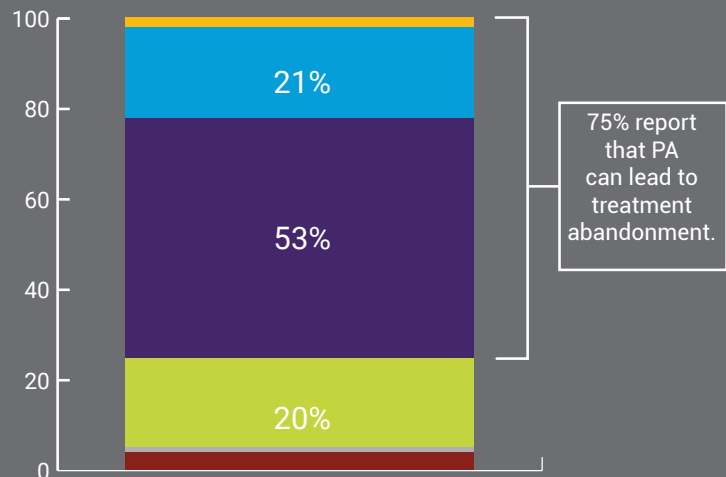
28% reported PA led to a serious adverse event

2018 American Medical Association (AMA) Prior Authorization Physician Survey: Patient Impact

Abandoned treatment associated with PA

Q: How often do issues related to the PA process lead to patients abandoning their recommended course of treatment?

- Always (2%)
- Often
- Sometimes
- Rarely
- Never (1%)
- Don't Know (4%)

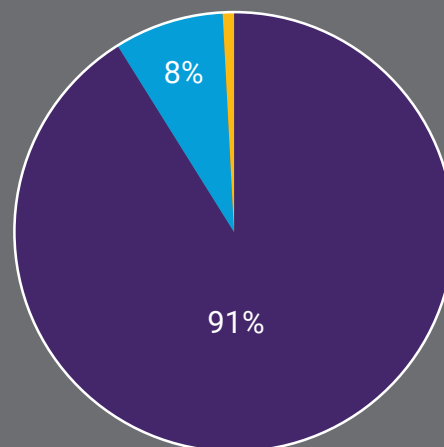


Total does not sum to 100 due to rounding. Subtotal sums to 75 percent due to rounding.

Impact of PA on clinical outcomes

Q: For those patients whose treatment requires PA, what is your perception of the overall impact of this process on patient clinical outcomes?

- Significant or somewhat **negative** impact
- No impact
- Significant or somewhat **positive** impact (2%)



Total does not sum to 100 due to rounding.



Join Us

KCOA MEETINGS OF INTEREST

OCTOBER 14, 2019

KCMS/KCOA LEGISLATIVE COMMITTEE LUNCHEON

Masonic Center | Noon

NOVEMBER 1-2, 2019

SYMPOSIUM FOR PRIMARY CARE MEDICINE

Diamond Conference Center | Novi, MI

See more information on page 20

NOVEMBER 8-10, 2019

MOA 15TH ANNUAL AUTUMN SCIENTIFIC CONVENTION

Amway Grand Plaza Hotel | Grand Rapids, MI

See more information on page 20

NOVEMBER 8, 2019

KCOA FALL SOCIAL RECEPTION

Amway Grand Plaza Hotel, Ambassador West Ballroom

6:15-7:15pm

NOVEMBER 22-24, 2019

FULFORD'S BASIC PERCUSSION HAMMER COURSE

Sheraton Novi | Detroit, MI

See more information on page 20

OUR MISSION:

Kent County Osteopathic Association seeks to advocate for the physicians of Kent County, advance the science and practice of osteopathic medicine, and provide an arena of osteopathic physicians to support and educate each other and their community.

Visit us

For event details, check out our website kcoa-mi.org



KCOA OFFICERS & DIRECTORS

PRESIDENT

Adam T. Wolfe, DO

VICE PRESIDENT

Jennifer Hemingway, DO

DIRECTORS

Christopher Barnes, DO

Craig Bethune, DO

Christopher Glisson, DO, MS

Claire Hamman, DO

Paul Harris, DO

Brad Irving, DO

Norm Keller, DO

Lance Owens, DO

William Sanders, DO

Jacob Stremers, DO

Laura VanderMolen, DO

MICHIGAN OSTEOPATHIC ASSOCIATION

PRESIDENT-ELECT

Jeffrey D. Postlewaite, DO

SPEAKER OF THE HOUSE

OF DELEGATES MICHIGAN OSTEOPATHIC ASSOCIATION

Craig H. Bethune, DO

MOA DELEGATION

Bradley Clegg, DO

Joanne Grzeszak, DO

Norman Keller, DO

Edward Lee, DO

Gary Marsiglia, DO

C. Eugene Soechtig, DO

Adam Wolfe, DO

John Wolfe, DO

PRESIDENT'S MESSAGE



Adam Wolfe, DO
2019 KCOA President,
Board of Directors

KCOA Summer Social

The Kent County Osteopathic Association held a summer social event at the Watermark Country Club on June 11. Physicians and spouses enjoyed great food and camaraderie to kick off the season.



KCOA Board President, Adam Wolfe, DO, took the time to thank Past-President Jennifer Hemingway, DO, for her dedication and years of service as President. She was unable to accept the award at a previous meeting.



Jeffrey Postlewaite, DO, President-elect of the Michigan Osteopathic Association, visits with Davis Dalton, DO and Jeffrey Ricketts, DO



CONTINUED ON PAGE 18

KCOA SUMMER SOCIAL CONTINUED FROM PAGE 17



Dr. Edward Lee and Mrs. Gloria Lee



Robert Seledotis, DO and Diana Dillman, DO



Jeffrey Ricketts, DO and Robert Gleffe, DO



KCOA Board Members (left to right) Norman Keller, DO, Bill Sanders, DO, KCOA President Adam Wolfe, DO, and Christopher Barnes, DO

Don't Forget Your 2020 Dues Payment!

Your continued membership in KCOA enables our Board to continue work to improve health care in our communities. **2020 dues are due by December 31.** Prompt payment of your 2020 KCOA dues is greatly appreciated! Call the office at 458-4157 or visit www.kcoa-mi.org to make your dues payment today.



KCOA

99 PERCENT DEDUCTIBLE

Tax Deductibility of Your Dues as a Business Expense

KCOA estimates that 1% of your 2020 dues will be nondeductible as this portion is allocable to lobbying as defined by law. If you pay for your 2020 dues prior to December 31, 2019, you may deduct up to 99% of that as a business expense.

Symposium for Primary Care Medicine

Friday and Saturday, November 1-2, 2019

The Diamond Banquet Center connected to the Hyatt Place Hotel at the Suburban Collection Showplace, Novi, Michigan

For Physicians, Physician Assistants, Nurse Practitioners and Nurses

16.0 Category 1-A AOA CME Credits

16.0 AMA PRA Category 1 Credit(s)TM

Featuring a Self-Guided Dermatology Virtual Workshop

Sponsored by:

Beaumont

MICHIGAN STATE UNIVERSITY

College of Osteopathic Medicine



Register at: beaumont.cloud-cme.com/fallprimarycare2019
Direct questions to: cme@beaumont.edu or call 947-522-1839

CME Opportunities for KCOA Members

West Michigan Osteopathic Association

WMOA FALL CONFERENCE

October 23, 2019
Delta Hotels by Marriott
Downtown Muskegon

- Registration & questions:
Email wmoa87@gmail.com

Beaumont Health

SYMPOSIUM FOR PRIMARY CARE MEDICINE

November 1-2, 2019
Diamond Conference Center
Suburban Collection Showplace
Novi, MI

- Number of CME credits available:
16 Category 1-A AOA CME Credits
& 16 AMA PRA Category 1 Credit(s)[™]
- Registration: <http://beaumont.cloud-cme.com/fallprimarycare2019>
- Questions: Call 947-522-1839 or email esther.gargalino@beaumont.org

Michigan Osteopathic Association

15TH ANNUAL AUTUMN SCIENTIFIC CONVENTION

November 8-10, 2019
Amway Grand Plaza
Grand Rapids, MI

- Number of CME credits available:
24 AOA 1-A credits
- Registration: <https://www.domoa.org/ed>
- Questions: 800-253-3590

Michigan Osteopathic Association

FULFORD LEGACY CONFERENCE

November 22-24, 2019
Sheraton Detroit Southfield
Novi, MI

- Number of CME credits available:
23 AOA Category 1-A
- Registration: <https://www.domoa.org/fulford>
- Questions: 517-347-1555

Michigan State University College of Osteopathic Medicine

PRINCIPLES OF MANUAL MEDICINE

December 6-9, 2019
MSU COM East Fee Hall
East Lansing, MI

- Number of CME credits available:
28.25 credits of Category 1-A
- Registration: www.com.msu.edu/cme
- Questions: 517-353-9714

Michigan Osteopathic Association

121TH ANNUAL SPRING SCIENTIFIC CONVENTION

May 14-17, 2020
The Westin Southfield Detroit
Detroit, MI

- Number of CME credits available:
32-35 AOA 1-A credits
- Registration: <https://www.domoa.org/ed>
- Questions: 517-347-1555

Northern Michigan Osteopathic Association NMOA SUMMER CONFERENCE

June 2020
Mission Point Resort
Mackinac Island, MI

- Number of CME credits available:
21-23 AOA 1-A credits anticipated
- Registration: <https://www.domoa.org/ed>
- Questions: 517-347-1555

Michigan State University College of Osteopathic Medicine

CME AVAILABLE ONLINE

Up to 56 1-B credits available.
Visit: <http://hal.bim.msu.edu/CMEonLine/start.html>



KENT MEDICAL FOUNDATION



Paul Nicholson
2019 Kent Medical
Foundation, Board Chair

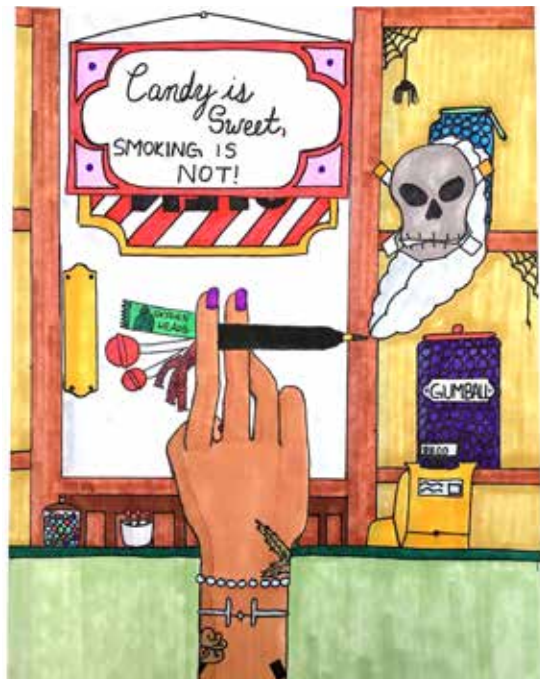
Youth Education

With the recent news of several deaths linked to vaping, and the number of vaping-related illnesses being reported, I continue to be proud of the Kent Medical Foundation's work with nicoTEAM. The program partners with middle schools, the teachers and students to encourage students to choose healthy lifestyles.

While vaping products were created to discourage cigarette smoking and help adults wean from the habit, it has been adopted by high school and middle school students. Sadly, young people been subject to alluring advertising. E-cigarettes are readily accessible, offer various flavors, and sadly, young people believe that they are safer than cigarettes, which also helped make them appealing.

The Kent Medical Foundation Board continues to support the need to educate the young people in our community regarding the hazards of tobacco use and vaping. The nicoTEAM program will hold its annual poster art contest with approximately 300 students in nine middle schools next spring. The peer education program will highlight 100 student artists' work to share peer-to-peer messages on avoiding the temptation to utilize tobacco and vaping products.

The KMF is also proud to sponsor the IV League Breakfasts events for retired KCMS and KCOA physicians. The doctors enjoy catching up with former colleagues and friends.



The nicoTEAM 2019 Jose Narezo
1st Place Award for Best Overall Poster

Physician Members in the Community

The Kent Medical Foundation Board recognizes contributions of physician members in the community with a \$250 donation in honor of the physician to the charity they support.



Sketch by Gretchen Minnhaar, AIA



Adam Wolfe, DO

Luis Tomatis, MD, Raises Funds for Arts Scholarship

Retired KCMS Member and Cardiovascular Surgeon, Luis Tomatis, MD, is no stranger to sharing his gifts with the community — linking his love for people, the arts, youth and community education and passions. Along with his wife, accomplished architect and fine art painter, Gretchen Minnhaar, he shared in their continued joys of discovering the world's beauty — in both functionality, history and simplicity.



When Gretchen passed away in June of 2018, the community shared in the loss. Her architectural knowledge is evident in many local buildings; her artwork decorates local hospitals and schools as well as galleries, exhibits and private collections all over the world.

Gretchen, the artist, shared how she saw the world through quick sketches she made of the people (and because of her architectural background, the buildings) of the 80 countries she visited. Aquinas College Art and Music Gallery showcased many pieces of Gretchen's work during a recent exhibit. A believer in gender equality in and through education, Gretchen's sketches were made available for purchase with all proceeds going to the Gretchen Minnhaar Scholarship Fund for Women in Art or Science at Aquinas College.

As co-founders of the nicoTEAM Art Poster Contest, an award named Minnhaar-Tomatis is presented in recognition of a middle school teacher who coordinates their school's participation in the annual poster contest.

Adam Wolfe, DO, Encourages "Ride with Purpose"

As an Internist, Adam Wolfe, DO is committed to support the fight to end Type 1 Diabetes Mellitus (T1D). He has served on the Board of Directors for the local Juvenile Diabetes Research

Foundation (JDRF) for 4 years and applauds the organization's commitment to research and advocacy efforts in addition to providing resources to families living with T1D. Research is supported to expedite a cure for T1D by helping the body's challenges to control glucose, reversing insulin dependence and prevent the progression of the disease in those at risk or recently diagnosed; and improving lives by treating people living with T1D with new drugs, therapies and devices that make it easier to stay healthy until the cure comes.

Dr. Wolfe's commitment to the goals are furthered by his dedication to raising funds and awareness. He has participated in 5 road rides (with distances ranging from 80-100 miles) in an effort to raise dollars to support this great organization. This year's 'Ride to Cure' is in La Crosse, Wisconsin, which is on track to raise 3 million dollars to support T1D research, technology and advocacy. There are 4 other rides this year raising funds for JDRF. In previous years, Dr. Wolfe has completed rides in South Carolina, Colorado, and New Mexico. One of the most amazing parts of the Ride experience is sharing the road with people living with T1D - proving



that there is no reason you can't achieve anything that you put your mind to when living with T1D.

CONTINUED ON PAGE 24

Health Care Experience In Your Corner.®

- Focused on health care law for physicians
- Commercialization of physician inventions and ideas
- Medical staff privileges
- State licensure and payor credentialing
- Employment and shareholder status and compensation
- Payor audits
- PHO, PO and CIN participation

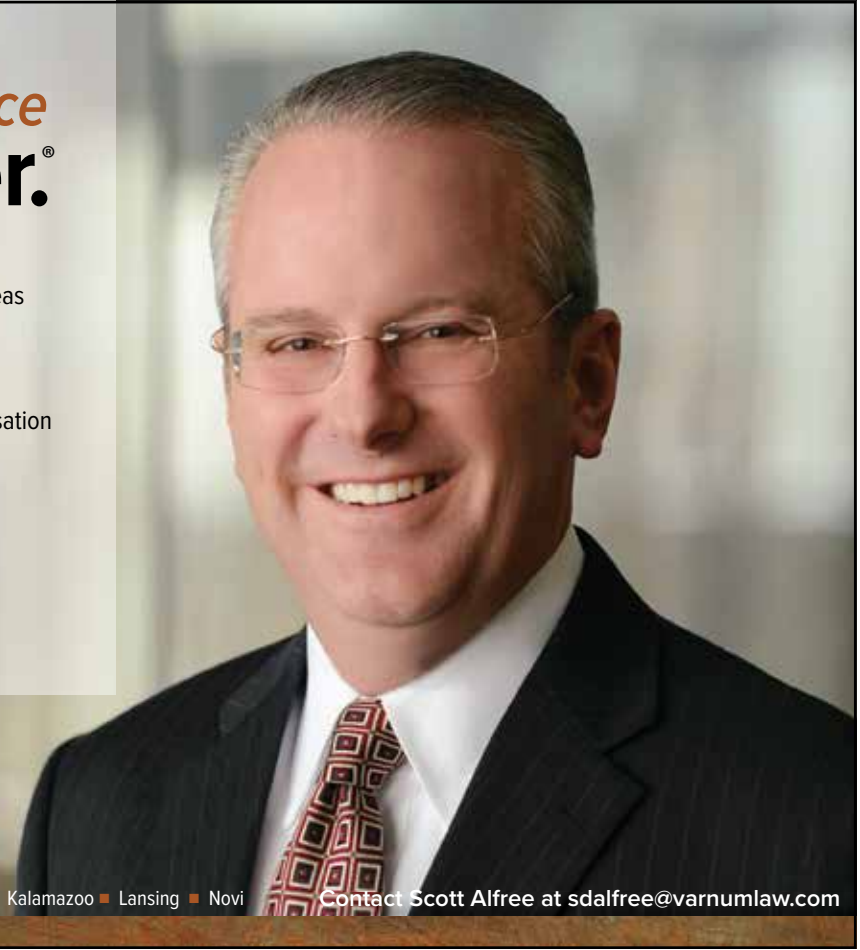
VARNUM
ATTORNEYS AT LAW



First Tier Ranking
in Health Care Law

■ Ann Arbor ■ Detroit ■ Grand Haven ■ Grand Rapids ■ Hastings ■ Kalamazoo ■ Lansing ■ Novi

Contact Scott Alfree at sdalfree@varnumlaw.com



Dr. Wolfe reports, "JDRF has been critical to fund clinical trials, support advocacy networks, and fight for what is right in the coverage of critical medications for my patients. I am proud to be a part of the effort to build upon the momentum to create a for my patients. Funding helps:

- 150 research grants and over 75 active clinical trial
- Faster, safer insulin delivery systems for patients with T1D
- Better glucose monitoring for patients living with T1D
- Critical steps toward curing T1D through insulin-producing cell implantation and early detection of genetic markers in patients at risk"

When not working in his busy practice, or volunteering for JDRF Board, Dr. Wolfe serves as Board President of the Kent County Osteopathic Association. Ride with purpose! is his motto.

Celebrating Life through Music


Pediatrician, Marcy Larson, MD and her husband, Anesthesiologist, Eric Larson, MD joined the musical



Andy Larson

ranks of *choir parents* when they discovered the angelic voice and growing musical gifts of their son Andy. Through the encouragement of their son's school music teacher, Andy's talent and joy for singing led him to the Grand Rapids Choir of Men and Boys (GRCMB) followed a year later by their younger son Peter who couldn't wait to join his voice with big brother Andy. Celebrating

its 30th Anniversary this fall, the Grand Rapids Choir of Men and Boys became the perfect place for the Larson family to encourage and support their sons' musical and spiritual lives.




**Protecting patients.
Protecting physicians.**

**MDPAC's
TOP ADVOCACY
ISSUES:**

- Prior Authorization Reform
- Substance use (Opioids, Marijuana)
- Auto No-Fault
- Scope of Practice
- Administrative simplification
- Mandates

By contributing to the MDPAC, you will substantially enhance MSMS's advocacy efforts, which promotes a pro-medicine agenda. By joining with other members, you create a constituency that represents your professional needs and concerns.

INVEST IN
MDPAC 
MDPAC.ORG

Commitments that children make to the many wonderful and varied youth organizations available in our community will only succeed when blessed by parents willing to be “full-in.” Marcy and Eric have tremendously supported their sons’ efforts in the Grand Rapids Choir of Men and Boys. Lending their support towards the entire organization, so often helping behind the scenes at rehearsals and concerts alike, checking the boys in and out of practices and attending board meetings to offer their advice and insights. Marcy even helped arrange a special GRCMB concert of Christmas carols for the young patients at DeVos Children’s Hospital.

However, in August of 2018, Andy’s life was tragically cut short when he died in a car crash. The family was on US-131 near the West River Drive exit to enjoy a fun family night of baseball at Fifth Third Ball Park when their van was rear-ended at high speed. Since that tragic night, the Larsons have leaned on family, friends and their choir family to help them deal with the crushing loss of Andy being suddenly taken.

Andy’s choir has also struggled to come to terms with their loss. The choir will record a new CD dedicated to Andy which will include several of Andy’s favorite pieces as well as several newly-composed choral works which the Choir has commissioned specifically to remember Andy.

To help other parents and families grieving the loss of a child, Marcy has created a podcast: Losing a Child: Always Andy’s Mom. To learn more, please visit Marcy’s website, at www.andysmom.com.



The Grand Rapids Choir of Men and Boys



The Larson Family

Andy’s Mom

Providing friendship, understanding, and hope to those going through the natural grieving process after the death of a child.

To read Dr. Marcy Larson’s blog and listen to her Always Andy’s Mom podcast, please visit www.andysmom.com.

KMF

THIS IS COMPOUNDING

Making Necessary Medication for Everyone



Keystone Pharmacy formulates medication into great tasting liquids for children with autism.

KEYSTONE PHARMACY
Specializing In Your Health

4021 Cascade Road SE, Grand Rapids, MI 49546 | (616) 974-9792 | KeystoneRx.com



SHARE YOUR HOLIDAY WISHES

WHILE HELPING THE KENT MEDICAL FOUNDATION RAISE FUNDS TO SUPPORT COMMUNITY PROGRAMS

Contribute to this annual campaign and your name will be listed among other donors who have helped make the annual Holiday Card possible!

CONTRIBUTIONS

Holiday Card Campaign Gifts received by November 28 will be included in the annual Holiday Card, which will be mailed the first week in December. You can contribute in two ways:

CHECK

Please make check payable to Kent Medical Foundation. Complete donor form at right and mail to:

Kent Medical Foundation
233 East Fulton, Suite 222
Grand Rapids, MI 49503



ONLINE VIA PAYPAL

Go to www.kcms.org/kmf
or simply scan this QR code.

QUESTIONS?

Please contact the Kent Medical Foundation at 616-458-4157.



KENT MEDICAL FOUNDATION

Holiday Card CAMPAIGN

DONOR REGISTRATION

YES! Count me/us in to continue the mission to assist The Kent Medical Foundation in community outreach endeavors and health promotion projects. Please find my/our check enclosed for the following amount (contribution amounts are NOT disclosed on the card):

\$1,000 \$750 \$500 \$250 \$100 \$ _____ Please keep my donation anonymous.

Please print your name(s) below exactly as you would like to be presented on the Holiday Card insert.

Name(s): _____

Address: _____

Email: _____ Phone: _____

Please return to: Kent Medical Foundation | 233 East Fulton, Suite 222 | Grand Rapids, MI 49503

Contributions are tax deductible.



KENT MEDICAL FOUNDATION

Holiday Card CAMPAIGN

IN GRATITUDE

THANK YOU DONORS FOR ALLOWING THE KMF BOARD THE
ABILITY TO SUPPORT THE FOLLOWING COMMUNITY PROGRAMS:

EQUINE ASSISTED DEVELOPMENT (EAD) \$5,000

Support for program utilizing therapy horses to help families at risk, underprivileged children, rescued victims of human trafficking and clients receiving treatment for PTSD. Sessions are client led and facilitated by an equine specialist and mental health professional for an interactive experience leading to personal growth and healing.

BOY SCOUTS OF AMERICA PHYSICIAN CITIZENSHIP AWARD \$300

Recognition and honoring of nominated physicians with gift card for dinner. The annual Physician Citizenship Award event provides an opportunity for medical professionals to gather and recognize a local physician for exceptional contributions and service within the community.

NICOTEAM 2019 POSTER CONTEST \$3,000

Support for the 13th Annual nicoTEAM Poster Contest in collaboration with the CDV5 Foundation and the Kent County Osteopathic Association. The contest is an annual tobacco and e-cigarette prevention education event for area public school students in grades 6 through 8. Students compete by designing posters that address the risks of underage tobacco and e-cigarette use and its effect on overall health.

IV LEAGUE BREAKFAST MEETINGS \$500

Sponsorship of casual, networking breakfast meetings for retired physician members. The breakfast meetings are held in the spring and fall at different locations around Grand Rapids. Gatherings provide social and fellowship opportunities for our retired MDs and DOs.

THE DOCTORS LOUNGE – A DOCTORS' DAY CELEBRATION \$250

Contribution of door prizes for physicians attending the 2019 Doctors' Day social event held at The B.O.B.

in downtown Grand Rapids. March 30th marks the annual observation of National Doctors' Day. This day was established to recognize the many contributions physicians make to individual lives and communities.

CALVIN UNIVERSITY H.E.A.L.T.H. CAMP 2019 \$3,190

Support and t-shirts for health education program for local girls ages 9 through 15. The program provides instruction on exercise and nutrition. At this free day camp just for girls, attendees learn about their health and explore jobs in the healthcare field.

AUTISM SUPPORT OF KENT COUNTY (ASK) WALK 2019 \$500

Sponsorship of the annual walk for autism awareness and education. Autism Support of Kent County (ASK) works to provide services, resources and fun family events that make it possible for individuals with autism in Kent County to lead healthier and more productive lives.

ASSOCIATION FOR THE BLIND AND VISUALLY IMPAIRED (ABVI) \$4,440

Purchase of screening equipment used for screening eyesight of seniors and low-income individuals. ABVI serves adults and youth with clinics, rehabilitation services, counseling and support groups in 13 West Michigan counties.

DEAF AND HARD OF HEARING SERVICES \$1,500

Sponsorship of the Deaf and Hard of Hearing Services (D&HHS) Silent Weekend program providing training to translators who assist hearing-impaired patients while visiting hospitals, medical and dental offices, and mental health agencies among other professional appointments. D&HHS also offers an after-hours answering service for medical and police emergencies.

PHYSICIANS INVOLVED IN OUR COMMUNITY

The following physicians were honored in 2019 by the Kent Medical Foundation, for their involvement and volunteer commitments:

Patrick J. Droste, MD, MS
Cars for a Cause for Children

Norm Keller, DO
Saladin Shriners

Marcy Larson, MD
Grand Rapids Choir
of Men and Boys

Khan Nedd, MD
Calvin University
H.E.A.L.T.H. Camp

**Jeffrey Ricketts, DO
and Robert Seledotis, DO**
The Michigan Company of
Military Historians and Collectors

Luis Tomatis, MD
Gretchen Minnhaar Scholarship
Fund for Women in Art or
Science at Aquinas College

Adam Wolfe, DO
Board Member, Juvenile
Diabetes Research Foundation,
Ride to Cure

KENT MEDICAL FOUNDATION BOARD OF TRUSTEES

Paul Nicholson
Chair

Brian F. Janssen
Vice Chair

Irene Betz
Secretary/Treasurer

Alexis Boyden

Kathleen Howard, MD

Deborah Shumaker

Thank You for Your Support

Members of Kent Medical Foundation Board of Trustees realize there is competition for your generosity, and we hope that you will continue to support KMF's mission. Thank you for your consideration.



heartbeat

MESSAGE FROM THE CO-PRESIDENTS

Some of our members attended the AMA Alliance meeting in Chicago this past June and the North Central States Regional meeting in Cleveland earlier this month. These meetings were a great opportunity to network with other alliance members and to share each other's challenges in our respective communities. The issues of opioid misuse, physician burnout, mental health and immunization continue to be in the forefront of problems facing both the medical community and society in general. Our alliance is part of the initiative to give information at the county level, to help build a healthier Kent County.

Take a look at what we've been up to and join us at one of our upcoming events. Please note that we've entered into a new fiscal year starting July 1. If you haven't renewed your membership dues, please do so now! You can go to our webpage www.kcmsalliance.org and click the "Join" tab.

Sincerely,

Blésie Beaumier & Eileen Brader,
KCMSA Co-Presidents

fall calendar

- | | | | |
|------------------------------------------|----------------------------------------------------------------------------------------------------------------------------------------------------------------------------------------------------------------------------------------------------------------------------------------------------------------|-----------------------------------|----------------------------------------------------------------------------------------------------------------------------------------------------------------------------------------------------------------------|
| <p>10 15
noon</p> | <p>Book Group
<i>Tea Girl of the Hummingbird Lane</i>
Schuler Books Kentwood</p> | <p>11 5
10am</p> | <p>Membership Meeting and Informational Tour
Tour by Colleen Davis at <i>Alternatives in Motion</i>. Meeting will begin at 11am.</p> |
| <p>10 22 & 29
1-3pm</p> | <p>Learn to play Mahjong with Arnette Kraus
At the home of Christine Pfennig. Please email president@kcmsalliance.org to sign up. We are taking the first 8 people, it is your responsibility to find a substitute if you are unable to attend.</p> | <p>11 12
5-9pm</p> | <p>Sip, Snack, Shop at Mason Jones in Breton Village
When you are done shopping stop in at Houlihan's for dinner. Both establishments will give back 15% to our Foundation.</p> |
| <p>10 23
6pm</p> | <p>Wellness Lecture
Made possible by the Shumaker Memorial Scholarship. Dr. Richard Gunderman guest speaker. Secchia Building</p> | <p>11 13
11:30am</p> | <p>Van Andel Institute 'A Conversation About Metabolism and Nutrition'
Cost is \$50 per person.</p> |
| <p>10 24
noon-2pm</p> | <p>MSMSA Fall Focus Mental Health Awareness Symposium
Tickets are \$30 for individual and \$200 for a reserved table of eight. Watermark Country Club</p> | <p>11 19
noon</p> | <p>Book Group
<i>Blood Brothers: The Dramatic Story of a Palestinian Christian Working for Peace in Israel</i> by Elias Chacour. Guest speaker KCMSA member, Suhair Muallem. Schuler Books Kentwood</p> |

All current and prospective members are welcome to attend any calendar event! For more information please use our website KCMSAlliance.org or email president@kcmsalliance.org

Event Recap summer

May

Health and Wellness: We participated in the Stomp Out Stigma Walk for Mental Health.

Social: Old Board/New Board Brunch. We used to keep binders for our respective positions and did a hand-off at this event, but now we have our documents on google docs, so there are no physical binders. However, we kept this tradition and share what we've learned.

June

AMA Alliance Meeting Chicago, IL

July

Health and Wellness: We walked 5 miles around Reeds Lake on a sunny morning.

August

Time and Talent: On August 15 we volunteered at In the Image's S.H.O.E.S. program where we fitted elementary students with new athletic shoes for school.

ALS Association: Michigan Chapter August 24 Tutu Trot walk around Reeds Lake.

Social: Physician Family Day on August 25. We gathered at the home of Todd and Pam Vitaz for a family picnic and pool party. Established in 2018, Physician Family Day is an effort by the AMA Alliance to bring awareness to physician burnout while underscoring the need for self-care as a necessary part of caring for patients, and honor physicians for the value they bring to their communities.

September

General Membership Meeting: On September 10 we met at the EGR Rec. Center where alliance member, Rebecca Vredenburg shared her knowledge of Yoga Nidra with us. Afterwards, we gathered at Olive's Restaurant for our meeting.



Spouses and partners of physicians, residents and medical students are encouraged to join the KCMS Alliance. You may pay membership dues for the 2019-20 year instantly at kcmsalliance.org/join. Our membership year is July 1-June 30. We would love for you to be on board this year.



Nirali Bora, MD
Kent County
Health Department
Medical Director and
Brian Hartl, MPH

Protecting Patients from Dangers of Electronic Nicotine Delivery Systems

As of September 19, 2019, 530 cases of severe pulmonary disease associated with the use of electronic cigarette (e-cigarette or vaping) products, have been reported to the Centers for Disease Control and Prevention (CDC) by 38 states and 1 U. S. territory, including 7 deaths.

Among cases for which age and gender data are available (373), two-thirds (67%) are 18-34 years old and 72% are male. As of September 16, six confirmed and one probable case have been reported in Michigan. All Michigan cases have been reported in the Lower Peninsula and most of the individuals have been hospitalized for severe respiratory illness. The age range of the cases in Michigan is 19-39 years. Additional pulmonary illness cases are under investigation by state and local health departments across the country, so it is expected that these numbers will continue to increase as more information becomes available. To date, the available evidence does not currently suggest that an infectious agent is the cause of illnesses and no specific substance or e-cigarette product has been linked to all cases. Many patients report using e-cigarette products with liquids that contain cannabinoid products, such as tetrahydrocannabinol (THC).

Electronic Nicotine Delivery Systems (ENDS), which include e-cigarettes, have become increasingly more popular in recent years, especially among younger populations. According to data from the 2017 Kent County Behavioral Risk Factor Survey (BRFS), 5.5% of Kent County adults 18 years of



age and older reported current use of e-cigarettes. Individuals 18-24 years of age were more likely to use e-cigarettes than older age groups (Figure 1), with 15.4% of this population reporting current use.

Use of ENDS in Youth

Data from surveys conducted in 2018 have shown drastic increases in the use of e-cigarettes among younger population compared to previous survey years, so it is likely that the 2017 BRFS data underestimates the prevalence of use among the Kent County population. Nationally, the Monitoring the Future survey showed that the percentage of high school seniors who reported vaping nicotine in the 30 days prior to the survey nearly doubled from 11 percent in 2017 to 20.9 percent in 2018.

FIGURE 1

Current Use of E-cigarettes by Age Group, Kent County, 2017 Behavioral Risk Factor Survey

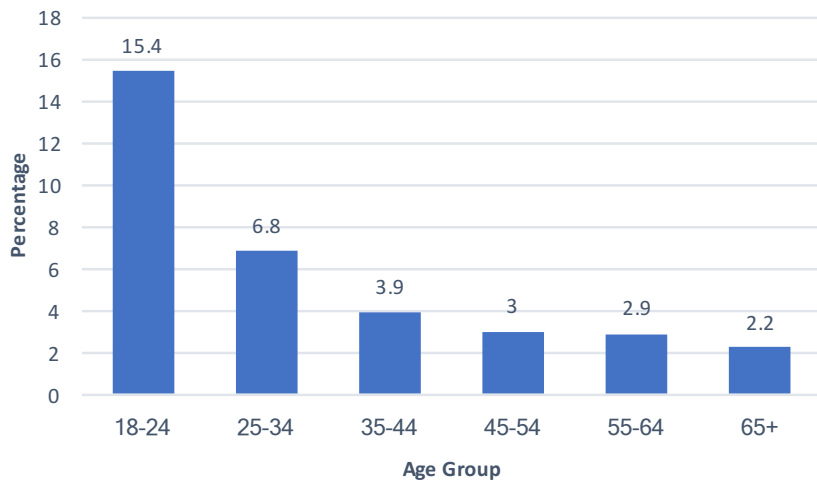
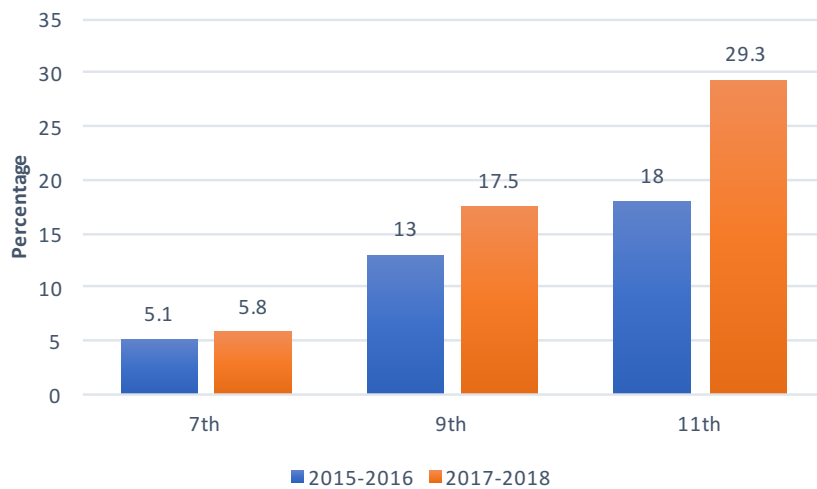


FIGURE 2

30-day use of E-cigarettes by Grade Level, Kent County, Michigan Profile for Healthy Youth



Local data on youth use of e-cigarettes comes from the Michigan Profile for Healthy Youth (MIPHY), a survey conducted every two years by the Michigan Departments of Education and Health and Human Services. In surveys conducted during the 2015-2016 and 2017-2018 school years, 2,000 Kent County middle school and 5,000 Kent County high school students participated each year. Results from the 2015-2016 surveys revealed that 5.1% of middle school and 15.4% of high school students used e-cigarettes in the past 30 days. In 2017-2018, these percentages increased to 5.8% for middle school and

22.2% for high school students. Figure 2 provides data on the increasing use of e-cigarettes with increasing age among students in Kent County. The survey also provides data on where students obtain vaping products. Nearly half of students indicated that they borrow products from someone else. Among high school students, 10% bought them in a store or gas station, 18% gave someone else money to buy them and 14% got them from a person 18 years of age or older.

Health risks of ENDS

The aerosol generated from ENDS include nicotine, flavorings, and other additives. At this time, there are no federal regulations to ensure that the contents of the solutions are accurately labeled. The concentration of nicotine also varies widely. In addition to nicotine, many carcinogens and toxins have been found in e-cigarette solutions. Studies indicate that ENDS can increase the risk of asthma exacerbations and are consistently more likely to transition to traditional cigarettes.

Providers should be aware of the symptoms of severe pulmonary disease reported by patients in the current outbreak. Symptoms experienced by confirmed cases include cough, shortness of breath, chest pain, fatigue, and fever. Other reported symptoms include weight loss, nausea, abdominal pain, vomiting and diarrhea. In previously reported cases, symptoms generally worsened over a period of days to weeks before hospital admission. If a case of severe pulmonary disease is suspected in a patient with a history of using e-cigarettes or other vaping devices, report it immediately to the local health department. If available, physicians should collect and hold all devices or substances used so they can be sent for laboratory testing if requested by public health.

CONTINUED ON PAGE 33



Notifiable Disease Report

Kent County Health Department
700 Fuller N.E.
Grand Rapids, Michigan 49503
www.accesskent.com/health

Communicable Disease Section
Phone (616) 632-7228
Fax (616) 632-7085

August 2019

Notifiable diseases reported for Kent County residents through end of month listed above.

DISEASE	NUMBER REPORTED		MEDIAN CUMULATIVE
	This Month	Cumulative 2019	Through August 2014-2018
AIDS	2	8	8
HIV	3	36	N/A
CAMPYLOBACTER	9	64	62
CHICKEN POX ^a	0	9	14
CHLAMYDIA	357	2453	2515
CRYPTOSPORIDIOSIS	3	13	16
Shiga Toxin Producing E. Coli	3	13	10
GIARDIASIS	2	17	30
GONORRHEA	120	861	549
H. INFLUENZAE DISEASE, INV	0	4	6
HEPATITIS A	0	4	1
HEPATITIS B (Acute)	0	0	0
HEPATITIS C (Acute)	0	3	1
HEPATITIS C (Chronic/Unknown)	13	141	226
INFLUENZA-LIKE ILLNESS ^b	356	19855	27639
LEGIONELLOSIS	1	16	3
LYME DISEASE	2	8	7
MENINGITIS, ASEPTIC	3	4	16
MENINGITIS, BACTERIAL, OTHER ^c	1	4	13
MENINGOCOCCAL DISEASE, INV	0	0	0
MUMPS	0	0	0
PERTUSSIS	2	6	10
SALMONELLOSIS	10	46	41
SHIGELLOSIS	3	14	17
STREP, GRP A, INV	2	12	27
STREP PNEUMO, INV	0	36	33
SYPHILIS (Primary & Secondary)	0	0	15
TUBERCULOSIS	1	6	6
WEST NILE VIRUS	0	0	0

NOTIFIABLE DISEASES OF LOW FREQUENCY

DISEASE	NUMBER REPORTED Cumulative 2019	DISEASE	NUMBER REPORTED Cumulative 2019
Kawasaki Syndrome	8	Toxic Shock	1
Streptococcal Toxic Shock	1	Cyclosporiasis	2
Carbapenemase Producing CRE	2	Malaria	1
Guillain-Barre Syndrome	1		
Vibriosis-Non Cholera	1		

a. Chickenpox cases are reported primarily from schools. Confirmed and probable cases are included.
 b. Includes "Influenza-Like Illness (ILI)" and lab-confirmed influenza. ILI cases have flu-like symptoms and are reported primarily by schools.
 c. "Meningitis, Bacterial, Other" includes meningitis and bacteremia caused by bacteria OTHER THAN H. influenzae, N. meningitidis, or S. pneumoniae.
Except for Chickenpox, Campylobacter, Cryptosporidiosis, Shiga-Toxin Producing E. Coli, Salmonellosis, Shigellosis & Influenza-Like Illness, only confirmed cases (as defined by National Surveillance Case Definitions: <http://www.cdc.gov/nndss/script/casedefDefault.aspx>) are included.
 Reports are considered provisional and subject to updating when more specific information becomes available.

KCHD

KENT COUNTY HEALTH DEPARTMENT

CONTINUED FROM PAGE 31

Counseling Youth on ENDS

In 2015, the American Academy of Pediatrics released a policy statement on ENDS and how to protect children from the dangers posed by these products. In the wake of the current outbreak of severe respiratory illness, these practices should extend to all clinical encounters. The policy statement recommends the following:

- Screen for ENDS use and provide prevention counseling in clinical practice.
 - *E-cigarette use is often not considered smoking. Asking “Do you smoke?” may not help you identify patients and families who use e-cigarettes. Instead, combine broad screening questions with specific examples, such as: “In the past year, have you used a tobacco product, like cigarettes, e-cigarettes (vaping devices such as tanks, mods or JUUL) or cigarillos/little cigars?”*
- ENDS use should not be recommended as a tobacco dependence treatment product.
- Patients who use ENDS should be offered or referred for tobacco-cessation counseling and FDA-approved tobacco dependence pharmacotherapies as appropriate to their level of addiction and readiness to change.

POLICY UPDATE

On September 4th, 2019, Michigan became the first state to ban flavored e-cigarettes. The ban will go into effect within 30 days, will last for six months, and can be renewed for another six months while permanent regulations are developed.

REFERENCES AND RESOURCES

- **E-Cigarettes and Similar Devices**
Brian P. Jenssen, Susan C. Walley,
SECTION ON TOBACCO CONTROL
Pediatrics Feb 2019, 143 (2) e20183652;
- **E-Cigarette fact sheet for parents**
[https://downloads.aap.org/RCE/
ENDShandout_Parents.pdf](https://downloads.aap.org/RCE/ENDShandout_Parents.pdf)
- **E-Cigarette fact sheet for clinicians**
[https://downloads.aap.org/RCE/
ENDShandout_Clinicians.pdf](https://downloads.aap.org/RCE/ENDShandout_Clinicians.pdf)

West Michigan Dermatology chose **FIRST** COMPANIES

TO CREATE THEIR SPACE!

“We’re grateful to be part of the West Michigan community. Working with First Companies, we created two locations – in Holland and Grandville – that enable us to serve a wide range of dermatology needs in the best way possible.”

Toni Van Wesep, Practice Administrator



Congratulations to West Michigan Dermatology

on their new 13,000 square foot medical facility located near Rivertown Crossings in Grandville, Michigan!

To see more of our work for medical professionals, visit:

firstcompanies.com/construction/medical

**We LOCATE, CREATE
and MANAGE spaces**
where businesses thrive



**YOUR SPACE,
OUR BUSINESS**

www.firstcompanies.com
616.698.5000



Mortgages for Physicians

As a professional in the community, you have unique financing needs.

Professionals like you work hard to achieve success in your career. Old National Bank offers a solution exclusively to eligible borrowers including Medical Doctors (MDs), Doctors of Osteopathic Medicine (DOs) and Optometrists who have completed their residency or fellowship program, and are joining or are currently employed by a hospital or medical practice, or are purchasing a medical practice. Our specialized mortgage loan helps you purchase your primary residence with up to 100% financing and no private mortgage insurance.

Choose from a variety of terms and options.

- Adjustable-rate with terms from 3 to 10 years
- Fixed-rate with terms from 10 to 30 years
- 100% loan-to-value ratio on loan amounts up to \$750,000¹
- 90% loan-to-value on loan amounts greater than \$750,000

Let me help with your mortgage needs so you have more time to take care of the people who rely on you.



Rick Murray
Office: 616-802-6877
rick.murray@oldnational.com
NMLS #533219

Apply online at: oldnational.com/murray

**Serving Grand Rapids, Holland,
Kalamazoo and Surrounding Areas**



Member FDIC 

Subject to credit approval. Property insurance required. Escrow for property taxes and insurance is required. Rates, terms and conditions effective as of November 7, 2018 and are subject to change. Available on first mortgage purchase transactions on owner-occupied residences only. Borrower must commit to moving his/her banking relationship to Old National and be open to being introduced to a Private Banker. Other restrictions may apply. See bank for details. ¹Based on a \$250,000 loan at 100% LTV, on a 360 month term, with a principal/interest payment of \$1,304.12 and an interest rate of 4.750%, the \$1,200 prepaid fee results in an APR of 4.792%. 1118-028



Angela Thompson-Busch, MD, PhD
Assistant Dean, Michigan State
University College of Human
Medicine Grand Rapids Campus

Welcome Class of 2023

On August 25, Dean Norman J. Beauchamp Jr. and faculty from MSU College of Human Medicine welcomed the Class of 2023 at our annual matriculation and White Coat Ceremony at DeVos Performance Hall.

This year, we had a record-breaking 7,982 applicants for 190 seats. Of available seats, 19 were designated to our Early Assurance Program students:

- 7 from Grand Valley State University
- 3 from Michigan State University
- 1 from U of M Flint
- 3 from Saginaw Valley State University
- 3 from Northern Michigan University
- 2 from Michigan Technological University

The Class of 2023 is 55% women and 45% men, and the age range is 19-46. Michigan residents comprise 75% of the class, and of the 26% who came from other states and provinces, 27 came from California.

In keeping with our college mission of responding to the needs of the medically underserved, 25 students are pursuing Leadership in Rural Medicine certificates and will learn the necessary clinical skills to meet the needs of rural communities. In most cases, these students have lived in rural communities in Michigan or are considering practicing in a small-town setting.

Sixteen students are entering the Rural Community Health Program where they will train in Northern Michigan communities for their final two years of medical school and nine students are entering the rural physician program where they will spend years three and four of medical school in Marquette and throughout the Upper Peninsula. Another 16 students are entering the Leadership in Medicine for the Underserved Program and will train in Flint during their last two years in medical school.

Diversity is a hallmark of the College of Human Medicine and setting our medical school admissions process apart is our wholistic review of our candidates. Prospective students are presented to the admissions committee anonymously—without names, race or sex identifiers—and our college has no quotas. We pick the very best students and it organically creates a richly diverse class, an important factor in our successful education of the future physicians in Michigan.

Diversity is a hallmark of the College of Human Medicine and setting our medical school admissions process apart is our wholistic review of our candidates. Prospective students are presented to the admissions committee anonymously—without names, race or sex identifiers—and our college has no quotas.



PRSRT STD
U.S. POSTAGE
PAID
Traverse City, MI
Permit No. 29

Kent County Medical Society
Kent County Osteopathic Association
233 East Fulton, Suite 222
Grand Rapids, MI 49503

Remember Your 2020 Dues Payment!

Your continued membership in KCMS/KCOA enables our Boards to continue work to improve health care in our communities. **2020 dues are due by December 31.** Prompt payment of your 2020 dues is greatly appreciated!

Call the office at 458-4157 with questions or assistance with processing your dues payment.

